

18 EXPRESSIVE STUDIES

(based upon scales)

C MAJOR



F. DEMNITZ

Allegro non troppo ♩ = 80

1.

p **5** *mf* **10** *p* *cresc.* *p* *cresc.* *f* *dim.* *rit.* **15** *a tempo* *p* **20** *cresc.* *f* *pesante*

A MINOR



Adagio ♩ = 58

2.

p *espressivo* **5** **10** *p* *cresc.* **15** *dim.* *p* *mf* **20** *mf* **25** *p* *cresc.* *mf*

G MAJOR



Andante ♩ = 76

3. *mp dolce*

5 *mf* *mp*

10

15 *f*

20 *dim.*

E MINOR



Allegro energico ♩ = 152 ♩. = 58

4. *mf*

5

10

15 *f*

20 *dim.*

mf *f*

D MAJOR



Moderato ♩ = 88

5. *mp* 5

mf 10 15 20

B MINOR



Allegretto non troppo ♩ = 108

6. *mf* *f*

5 *f*

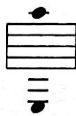
10 *p* *f* *p*

15 *f*

20 *dim.*

25 *p*

A MAJOR



Moderato assai ♩ = 84

7. *mf*

5 M M

f

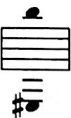
p

10 *f* *p dolce*

M 15 *f* *f* *f*

f *p* *f*

F # MINOR



Poco lento ♩ = 50

8. *p* *sostenuto*

5 *p* *mf*

10 *mf* *rit.*

a tempo *dolce espr.* 15 *mf*

Handwritten notes: L (R) H, CF, CF, L, CF, CF, M, R-L, C T

20

25

30

p

mf

rit.

E MAJOR

Moderato ♩ = 112

9.

5

10

15

20

25

30

35

p

f

dim.

p

R

RL R